



search go
 plants site

most popular [flower names](#) • [vegetable ga](#)
[landscaping projects](#) • [plant](#)
[organic gardening](#) • [contain](#)

[plant encyclopedia](#) | [flowers](#) | [regional gardening](#) | [garden plans](#) | [landscaping](#) | [lawn and yard](#)

[BHG.com](#) / [Gardening](#) / [Flowers](#)

[Comments](#) [I Like This!](#) (67) [Print This](#) [Clip it](#) [SHARE](#) [f](#) [t](#) [g+](#)

[my garden](#)
[most recent](#)

top new blue, pink, and purple annuals for 2010

Slide 12 of 40



illusion midnight lace sweet potato vine

Sweet potato vines are some of the most popular **container garden** plants around. Older varieties can be a bit vigorous and overtake plantings by the end of the season. This variety surprised us with its compact, mounded habit.

Name: Illusion Midnight Lace *Ipomoea batatas*

Growing conditions: Full sun or part shade and moist, well-drained soil

Size: To 12 inches tall and 36 inches wide

Grow it with: Enjoy a stunning all-foliage container that looks good from spring to fall by planting sweet potato vine with purple fountaingrass.

Source: provenwinners.com

Available from seed: No

[Learn more about sweet potato vine.](#)

FindaPro Get quotes for landscape, deck, and fence projects from pros in your area.

annah2 says:
Beautiful.

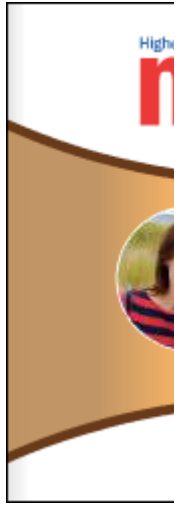
related links

18 Great Citrus Desserts
The citrus flavor of orange adds a brightness and ...

related videos

Cinco de Mayo Drinks
Better takes the typical margarita and makes it "b..."

ADVERTISEMENT



videos [top](#)

Deli Dip
c...

Asp Star

Bea Turr som